



Charles A. Cale, N.D., D.C.



W.A. Budden, D.C., N.D.



Oakley Smith, D.C., D.N.



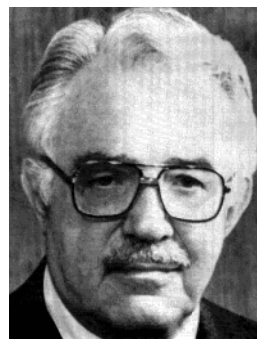
John J. Nugent, D.C.



Carl S. Cleveland, Jr., D.C.



Fred W. Illi, D.C.



Joseph Janse, D.C., N.D.



Sylva L. Ashworth, D.C.



T.F. Ratledge, D.C.



Ruth Cleveland, D.C.



Carl S. Cleveland, Sr., D.C.



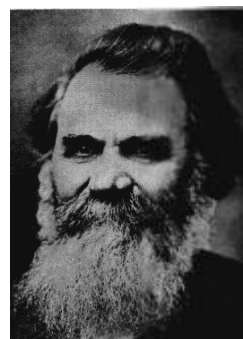
Perl B. Griffin, D.C.



Leonard E. Faye, D.C., N.D.



D.D. Palmer



D.D. Palmer



Lillard T. Marshall, D.C.



John B. Wolfe, B.S., D.C.



Orval Hidde, D.C., J.D.



C.O. Watkins, D.C., circa 1935



C.O. Watkins, D.C., circa 1955



Carl S. Cleveland Sr., D.C.



Carl S. Cleveland, Sr., D.C.



Craig M. Kightlinger, D.C.



James R. Drain, D.C.



Patrick Lackey, D.C., N.D.,
circa 1935



Ralph J. Martin, D.C., N.D.,
circa 1970



Linnie A. Cale, D.C., D.O.,
N.D., 1922



T.F. Ratledge, D.C.



George Starr White, M.D.,
Ph.D., D.C., Honorary Dean of
the LACC, 1921-1924



Charles H. Wood, D.C., N.D.,
circa 1920



Joseph Janse, D.D.T., D.C.,
N.D., circa 1939



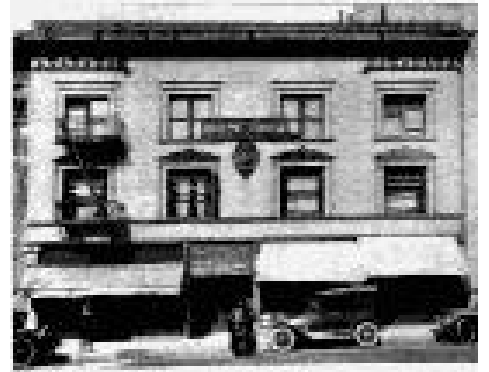
Henry G. Higley, D.C., N.D.,
M.S.



Faculty of the California Chiropractic College, 1920



LACC graduating class, 1917



Eclectic College of Chiropractic, 1920

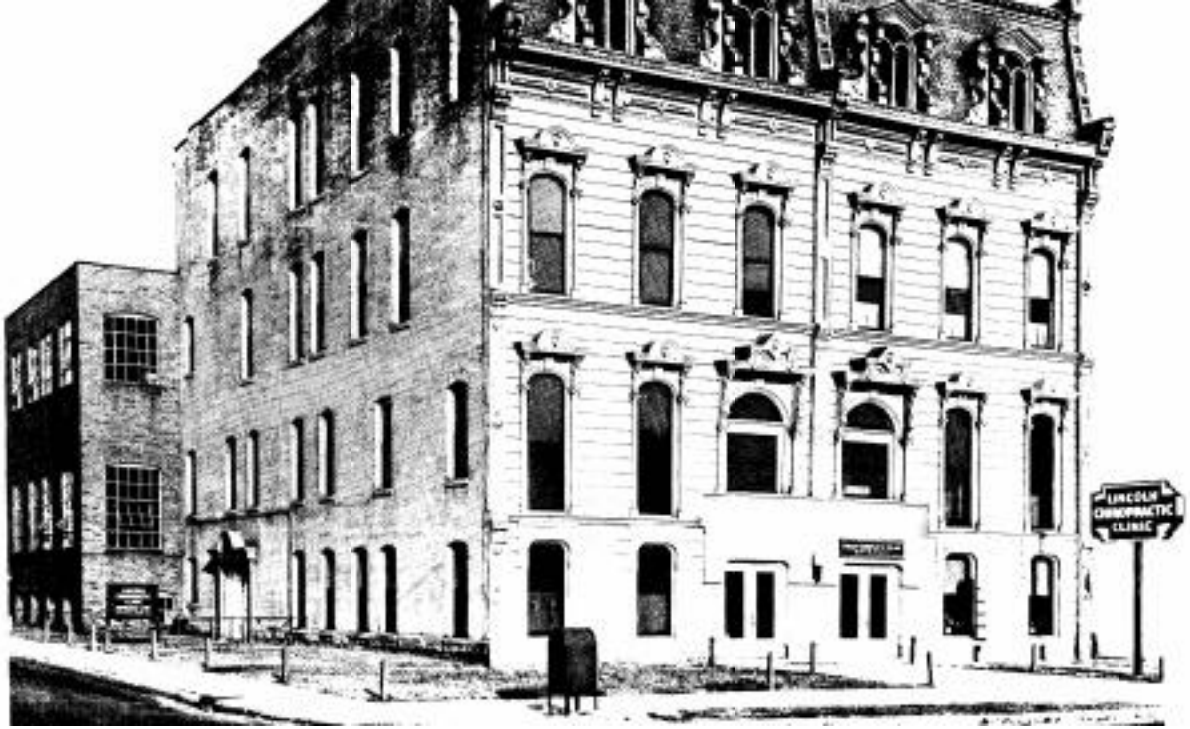




Western States Chiropractic College, 1536 S.E. 11th Avenue, Portland, Oregon, circa 1938



Logan Basic College of Chiropractic, 7701 Florissant Road, St. Louis, Missouri, circa 1938



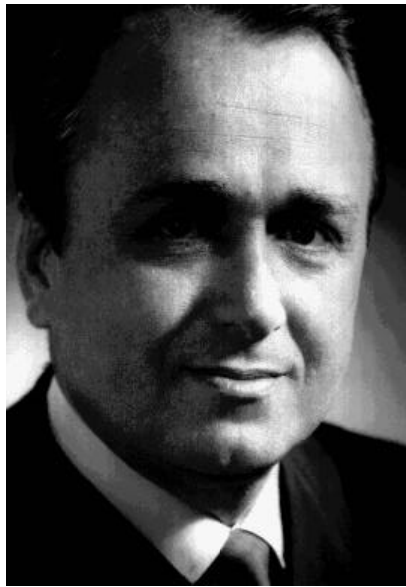
Lincoln Chiropractic College, Indianapolis, circa 1938



Kolar Health Clinic, Wichita, Kansas, circa 1938



T.F. Ratledge, D.C.



Herbert J. Vear, D.C., circa 1975